

# ema2

ELECTRONIC MICRO ALARM



## EMA2 – an innovated successor to the popular car alarm

Dear Customer,

*thank you for purchasing the EMA2 alarm system – a car alarm developed by FLAJZAR s.r.o.*

*The EMA2 is a miniature GSM car alarm designed to secure almost any type of car without the need for installation and it's also easily transported from a car to a car.*

*Car security has never been easier to install and more enjoyable to use! Installation of the EMA2 car alarm is based simply on inserting the alarm into the cigarette lighter socket. With automatic activation and deactivation of the protection with authorisation pendants, you don't have to worry whether or not you have forgotten to turn the protection on or off. The protection activates itself when you leave the car and it deactivates itself when you arrive to your car.*

## **Main advantages of the EMA2:**

- No installation
- Automatic activation and deactivation of the protection
- Very easy to set up
- Backup battery life up to 7 days
- Minimal operating costs
- Possibility of upgrading the alarm with a GPS receiver and wireless detectors

## **Optional accessories for the EMA2:**

- Authorisation pendants
- GPS receiver
- Wireless PIR motion detector
- Wireless shock detector
- Combined wireless detector
- Power cord extension

The EMA2 doesn't aim to replace expensive built-in alarms and satellite systems, but it is a very welcome option that enhances the security of your vehicle – whether you are parking at a shopping centre, on city streets, you are possibly fishing or at weekend cottage.

## **Summary of the main features and functions**

- A unique security device that requires no installation
- Automatic activation and deactivation of the protection
- Designed for any type of car\*
- An integrated shock sensor directly in the alarm
- It can be upgraded with additional sensors
- It allows you to connect a GPS receiver for accurate positioning
- In the case of a space violation, it calls and sends an SMS to up to 3 phone numbers
- It has a built-in backup battery
- It can be configured easily with a PC, SMS or multi-function button

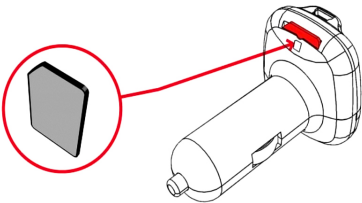
\* A standard 12V on-board socket for a cigarette lighter with an internal diameter of 20.5mm to 21.5mm is a prerequisite for the device

## Commissioning

Insert an **activated** micro SIM card from your mobile operator with the **PIN code off**.

Insert the micro SIM card and briefly press the multi-function button at the top of the alarm. The green light in the button lights up and after a while, the blue light starts to flash.

This means that the EMA2 is logged on to the mobile operator's network and is ready for use.



### Teach the EMA2 your phone number:

Briefly press the button again, the green and blue lights should flash alternately - EMA2 is in learning mode. Send a text message to the EMA2 (SIM card telephone number in EMA2) from your mobile phone with the following text: "LET'S GET STARTED", after a while you will



receive a welcome SMS, your phone number has been stored in the EMA2.

### Teach the EMA2 your authorisation pendant, or other accessories:

Briefly press the button, the green light alternates with the blue – the EMA2 is in learning mode. Using a paper clip, briefly press the authorisation pendant's learning button, both LEDs will flash after learning is successful.



From now on, the EMA2 is set to factory default. Other settings can be made at any time by connecting to a PC and the EMA2Config configuration programme.

**Note:** Insert the newly purchased SIM card into your mobile phone and disable the PIN code. To activate and validate a new card, we recommend that you to make the first outgoing call and send an SMS – therefore, the SIM card will be activated in the operator's network.

**Note:** We recommend that you to turn off the voice mailbox on the SIM card of the EMA2 alarm as well as the welcome melody or other operator messages. This setting needs to be carried out on the mobile phone with the SIM card inserted from the EMA2 alarm.

**Note:** The EMA2 contains an integrated Li-Ion battery that can discharge when it hasn't been used for a long time. Therefore, we recommend charging the EMA2 alarm prior to its first use. Full charge takes approximately 3 hours. Insert the EMA2 into the 12V board connector or connect to a PC with a USB cable.

## EMA2 default setting

- Default configuration program and SMS password: 1234
- Alarm call is turned on
- Sending SMS when alarm is on
- Service SMS is turned on
- Controlling the monitoring state by calling is on
- Daily SMS limit is enabled with a limit of 50 outgoing SMS
- Intercept is switched on
- Integrated shock detector is on, medium sensitivity

## Activation and deactivation of the protection mode

The EMA2 allows two ways of activating and deactivating the protection:

### Automatic activation and deactivation with an authorisation pendant

When you leave the car with the authorisation pendant, the EMA2 starts counting 60 seconds. If during this time it doesn't detect the presence of the authorisation pendant, it activates the protection.



When you are approaching the car with an authorisation pendant, the EMA2 detects the presence of the pendant and automatically switches the protection off.



## Manual activation and deactivation using a mobile phone

In this mode, the protection status is controlled by the user – with a free ringtone or SMS. When leaving the car, call the EMA2 or send an SMS with a command to activate protection.



Before approaching the car, call the EMA2 or send an SMS with a command to deactivate the protection.



### Description of the signalling indicators

Both indicator lights are off – **switched off**

**Green** is on continuously – **switched on, not protecting**

**Green** flashes briefly once every 2 seconds – **switched on, protecting**

**Green** flashes briefly once every second, **blue** is off – **sleep, protecting**

**Blue** flashes – GSM signal strength is OK

**Blue** doesn't flash – weak or no GSM signal

**Green** and **Blue** flashing alternately – **learning mode is on**

## Operating conditions

### Off:

- GSM off
- Integrated sensor and wireless sensors are switched off

*The EMA2 switches to this mode by pressing the button for a long time or by discharging the backup battery. Button deactivation is enabled only if the EMA2 is not in protection mode (the authorisation pendant is within range or the protection is turned off via an SMS command).*

### Switched on:

- GSM turned on
- Integrated sensor and wireless sensors are turned on

*The EMA2 switches to this mode in the following cases:*

- Connection of 12V power or USB
- Alarm activation with an integrated or wireless sensor
- By pressing the button (if the EMA2 has been in Sleep or Off mode)

### Sleep:

- GSM turned off
- The integrated sensor and wireless sensors are turned on

*The EMA2 switches to this mode in the following cases:*

- 12V power or USB is disconnected and the protection is on
- 2 hours after the alarm was triggered

## The EMA2 in a permanent power plug

The EMA2 is permanently on, it can receive SMS and calls.

## The EMA2 in a plug with power off/on

As soon as the power is switched off and the protection is activated (pendant out of reach, or SMS/call activa-

tion), the EMA2 switches to Sleep mode after five minutes to save the backup battery's power.

Upon entering the car, an integrated or wireless sensor is triggered, the EMA2 switches from Sleep mode to ON mode and counts 20 seconds to catch the signal from the pendant and as soon as it receives the signal, it turns the protection off, otherwise it will trigger the alarm.

After an alarm, the EMA2 remains in ON mode for two hours, the two-hour interval begins to count down from the moment the user sends an SMS.

### Configuration using a computer

The EMA2 alarm can be configured easily using a computer with OS Windows.

Download the EMA2Config configuration program from [www.flajzar.cz](http://www.flajzar.cz), run the installation and follow the installation program's instructions.

After successful installation, an EMA2Config icon is created on the desktop, which can be used to start the program.

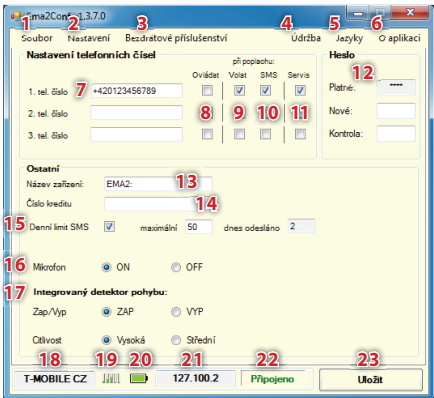
**Note:** *The installation and operation of the programme must be carried out with PC Administrator rights. If during the installation, Windows alerts you to run and install an unknown software, proceed with the installation.*

**Note:** *We recommend that you install Microsoft Net Framework 3.5 from Microsoft's Website for the application to run properly.*

**Note:** *A password is required when running the program with the connected EMA2 alarm (it is common for both SMS commands as well as software configuration). The default password is 1234 and can be changed (recommended).*



## Page 1 of the program – Settings



**1. File** – allows you to load and save the EMA2 settings from a file and update the firmware from the file.

**2. Settings** – switches to the first page of the configuration program with the EMA2 settings

**3. Wireless accessories** – switches to the second page of the configuration program with a wireless accessory setting

**4. Maintenance** – allows to turn on/off the new firmware automatic check and configuration program and perform manual update checks

**5. Languages** – allows you to change the configuration program language

**6. About the application** – opens the EMA2 instruction manual

**7. Setting up phone numbers** – the EMA2 allows

communication with up to three phone numbers.

Telephone numbers have to be entered in an international format with the dialling code: +420123456789

**8.) Control** – allows this phone number to control the state of protection by calling

**9. Call** – in the case of an alarm, this number will be dialled

**10. SMS** – in the case of an alarm, an SMS will be sent to this phone number

**11. Service** – a service SMS will be sent to this phone number

**12. Password** – change the password to access the configuration program and SMS. Enter the new password in the “New” field and “Check” field and save the settings with the “Save” button

**13. Device name** – this text will be at the beginning of each outgoing SMS sent by the EMA2

**14. Credit number** – is a number to call to find out the amount of credit on pre-paid SIM cards. Enter the number according to the SIM card phone provider in the EMA2

**15. Daily SMS limit** – maximum number of outgoing SMS in 24 hours. Enables/disables daytime SMS limit feature (max. 50 SMS). Maximum: maximum amount of outgoing SMS in 24 hours. Today sent: current amount of outgoing SMS in 24 hours

**16. Microphone** – enables/disables listening function

**17. Integrated motion detector** – setting the vibration sensor inside the EMA2 On/Off - Enables/disables the integrated sensor. Sensitivity – setting the sensitivity of the integrated sensor

**18. Mobile operator name** – displays the name of the SIM card's mobile operator

**19. GSM signal strength** – displays the current GSM signal strength

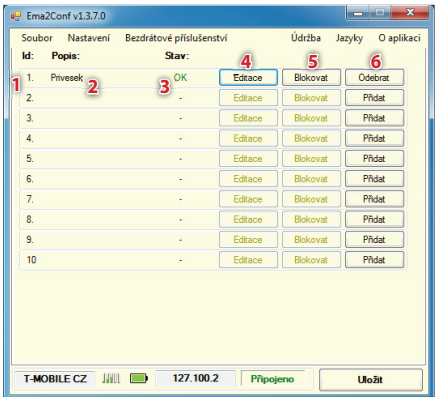
**20. Battery** – displays the current status of the backup battery

**21. EMA2 version** – displays the Firmware and the EMA2 Hardware version

**22. USB connection status** – displays the current USB connection status

**23. Save** – saves the configuration program settings to the EMA2

## Page 2 of the program – Wireless Accessories



**1. ID:** – accessory number in the list

**2. Description:** – name of the wireless accessory

- 3. Status:** – wireless accessory status
- 4. Editing** – change of name or other accessory settings
- 5. Block/Unblock** – block/unblock accessories
- 6. Remove/Add** – clears the already learnt accessories/starts learning a new accessory

## Controlling and configuration via SMS commands

Controlling the EMA2 alarm via SMS commands is simple. However, a few basic rules must be followed and it's also necessary to keep the exact form of the SMS. The SMS command is composed of a numeric password (e.g. the default password is **1234**), space and the command itself (e.g.: **STATUS**). The SMS mustn't include any other characters. The resulting SMS has a form without quotation marks, for example: **1234 STATUS**

### Controlling SMS commands:

|                |   |
|----------------|---|
| STATUS         | Detects the current status of the EMA2  |
| CREDIT         | Detects the SIM card credit and its validity. In order for the function to be used, it is necessary to fill in the credit number, for example *101# for T-mobile  |
| LOCATION       | Detects the current GPS location of the EMA2. To use this feature, the EMA2 must be connected to a GPS receiver - E2GPS. (Note: positioning may take up to 2 minutes depending on the GPS signal strength.) |
| PROTECT        | Command for manual activation of the protection   |
| DO NOT PROTECT | Command for manual deactivation of the protection   |

|              |   |
|--------------|---|
| UNBLOCK      | In case the SMS daily limit has been exceeded and outgoing SMS have been blocked. You can use this command to unblock it. |
| PENDANTS OFF | Blocks authorisation pendants. (Note: The pendants are automatically unlocked when the EMA2 is turned on.)                |
| PENDANTS ON  | Unlocks authorisation pendants  |

**Note:** Controlling SMS commands can also be used without a password if your phone number is saved in the EMA2.

### Configuration SMS commands:

|                       |   |
|-----------------------|---|
| LET'S GET STARTED     | Saves the SMS sender's phone number in the first position and assigns them the default settings.  |
| NUMBER1 +420xxxxxxxxx | Changing the phone number to position 1, + 420XXXXXXXXX is the phone number. To change phone number 2, use the NUMBER2 command  |
| DELETENUMBER1         | Removes the number in position 1. Use the DELETENUMBER2 command to delete position 2  |
| SETNUMBER1 ABCD       | Change the phone number settings to position 1. Use the SETNUMBER2 command to change phone number 2 settings. More information in the table for Changing phone sensor settings. |
| NPASSWORD XXXX        | Change the access password for SMS commands and the configuration program. XXXX represents a new password   |

|             |   |
|-------------|---|
| SETDEFAULT  | Resets factory settings. For more information, see "Restoring the factory settings" section |
| IMEI NUMBER | Restores the forgotten access password for SMS and the configuration program                |

## Change phone number settings

*SETNUMBER1 Parameters: ABCD*

---

|         |  |
|---------|--|
| A       | A = 1: the number can control the protection status by calling, A = 0: the protection status can't be controlled by calling.   |
| B       | B = 1: call to this number when the alarm is on, B = 0: don't call.  |
| C       | C = 1: send an SMS to this number when the alarm is on, C = 0: don't send SMS.   |
| D       | D = 1: send a service SMS to this number, D = 0: don't send a service SMS.   |
| Example | SETNUMBER1 1010 - the number is allowed to activate/deactivate the protection by calling, when the alarm is on, the number isn't called, when the alarm is on, an SMS is sent to the number, a service SMS isn't sent to the number. |

## Restore factory settings

Restore factory settings is to clear all user settings including password.

### Default password is "1234".

Restore is carried out via the SMS command: **"password SETDEFAULT"**.

The EMA2 confirms the restoring the factory settings via an SMS.

## Resetting forgotten password

To reset the access password for SMS and the configuration program, briefly press the button, the green light begins to flash and the blue light is on.

Send an SMS to the EMA2 phone number containing an IMEI number (without a password).

The EMA2 confirms the password has been reset by SMS.

**The password is now "1234".**

## Control by calling

The protection status can be controlled free of charge by ringing. Ringing means calling the EMA2 phone number, wait for the completion of one or two whole ringtones on the handset and **then end the call.**

## Service SMS notification

If the "Service" setting is enabled for the phone number, the following messages are sent to it:

- Exceeding the daily limit of outgoing SMS
- Notification regarding a discharged EMA2 backup battery

## Technical parameters

|   |                              |
|---|------------------------------|
| <i>Dimensions:</i>                        | 38 × 42 × 69 mm              |
| <i>GSM Frequency:</i>                     | 850/900/1800/1900 MHz        |
| <i>Frequency of wireless accessories:</i> | 868MHz                       |
| <i>GSM performance:</i>                   | Class 1 (1 W), Class 4 (2 W) |
| <i>Power and charge:</i>                  | 7–16 V DC (On-board 12 V)    |

|                               |  |
|-------------------------------|--|
| <b>Charging only:</b>         | 5V DC from a USB port                                |
| <b>Subscription:</b>          | 200 mA charging, 600 mA<br>max. in GSM communication |
| <b>Operating temperature:</b> | -20 up +70°C   |

## Guarantee

- The manufacturer provides a guarantee of 24 months from the date of sale. The guarantee does not cover damage caused by improper connection and use contrary to this manual.
- The guarantee cannot be accepted in cases of mechanical damage to the equipment, damage due to overvoltage, overload or static discharge.
- When sending the device to claim, please provide a description of the defect and the purchase document or warranty document.

## Warning

- The device has been verified by an accredited test facility and contains the Declaration of Conformity (this and other documents are available for download at [www.flajzar.cz](http://www.flajzar.cz)).
- The manufacturer is not responsible for any malfunctions caused by changes on the operator's side after the date given in the introduction to this instruction manual and for damages caused by improper use.
- The use and operation of this device should be carried out by a person familiar with this instruction manual and operating procedures. The device is designed for use in a dry environment.
- The device is not intended for explosive or flammable areas.



## Notes on use

- The SIM card must have disabled PIN code and must be activated (it has made a call)
- The idle consumption of the device depends on the operating conditions (signal strength, mode, communication with the operator's network, etc.)
- Outgoing calls and SMS from the device's inserted SIM card are charged according to the selected operator's service pricelist. The manufacturer or retailer does not charge any additional operating fees.
- Calling/ringing means one or two whole tones on the handset. Then the call must be ended.
- Calling means more than three tones in the handset. If call interception is enabled, the call will be answered.
- In the case of a malfunction, check the power, signal strength, SIM card status and its functionality by inserting it into your mobile phone.
- After an alarm is triggered, the next alarm message is blocked for 5 minutes.

## Recycling

Information for users to dispose of electrical and electronic equipment. The symbol on the product, its packaging or in the accompanying documentation means that the used electrical or electronic products must not be disposed together with municipal waste. In order to properly dispose of the product, transfer it to the designated collection points where they will be accepted free of charge. Improper disposal of this type of waste may be subject to fines in accordance with national regulations.

The device battery can be changed by the device manufacturer at the following address:



**FLAJZAR, s.r.o., Lidéřovice no. 151,  
696 61 Vnorovy (Hodonín)**

Tel.: +420 776 586 866, [www.flajzar.cz](http://www.flajzar.cz).

The manufacturer shall secure their ecological disposal at their own expense. Incorrect disposal of used batteries and accumulators could damage the environment. Do not throw into a fire, do not disassemble and do not short circuit.

### Manufacturer, servicing and technical support

**FLAJZAR, s.r.o.,**

Lidéřovice no. 151, 696 61 Vnorovy (Hodonín)

E-mail: [flajzar@flajzar.cz](mailto:flajzar@flajzar.cz), [www.flajzar.cz](http://www.flajzar.cz)

Tel.: +420 776 586 866

Send any technical questions on the device via email to [technik@flajzar.cz](mailto:technik@flajzar.cz)

*Copying the instruction manual or its parts is only with the written permission of FLAJZAR, s.r.o*

# Authorization Tag E2-TAG

Wireless accessories  
for the EMA2 car alarm



## Authorization Tag E2-TAG

It automatically activates and deactivates the monitoring status of the EMA2 car alarm.

Refer to the EMA2 car alarm instructions for more information on the tag function.

## LEARN Button

When pressed shortly, it sends the learn code for pairing with the EMA2 car alarm, it switches on the tag if it was turned off. When pressed for more than 6 seconds, the tag is turned off.

The button is on the bottom of the tag; use a paper clip to press it.

See the EMA2 car alarm instructions for pairing procedure.

## Battery Replacement

Loosen the three bottom screws at the sides of the box using a narrow crosshead screwdriver and open the up-



per lid of the tag, remove the old battery and replace it with a new one. Please observe the polarity indicated on the battery and the battery holder. Close and screw the box.

We recommend using only high quality batteries, for example by Panasonic, Varta, Energizer, GP, Sony or Duracell.

## Specifications

|                               |   |
|-------------------------------|---|
| <b>Dimensions:</b>            | 31 × 41 × 14 mm                                   |
| <b>Battery:</b>               | CR2450, type lifetime 1 year                      |
| <b>Operating band:</b>        | 868 MHz   |
| <b>Operating temperature:</b> | -10 to +55 °C                                     |
| <b>Communication range:</b>   | up to 20 m in free space, up to 6 m in a building |

## Recycling

Information for users to dispose of electrical and electronic equipment. The symbol on the product, its packaging or in the accompanying documentation means that the used electrical or electronic products must not be disposed together with municipal waste. In order to properly dispose of the product, transfer it to the designated collection points where they will be accepted free of charge. Improper disposal of this type of waste may be subject to fines in accordance with national regulations.

The device battery can be changed by the device manufacturer at the following address:



**FLAJZAR, s.r.o., Lidéřovice no. 151,  
696 61 Vnorovy (Hodonín)**

Tel.:+420 776 586 866, [www.flajzar.cz](http://www.flajzar.cz).

The manufacturer shall secure their ecological disposal at their own expense. Incorrect disposal of used batteries and accumulators could damage the environment.

**Do not disassemble, short-circuit or throw them in fire.**

## Manufacturer, servicing and technical support

**FLAJZAR,s.r.o.,**

Lidéřovice no. 151, 696 61 Vnorovy (Hodonín)

E-mail: [flajzar@flajzar.cz](mailto:flajzar@flajzar.cz), [www.flajzar.cz](http://www.flajzar.cz)

Tel.: +420 776 586 866

Send any technical questions on the device via email to [technik@flajzar.cz](mailto:technik@flajzar.cz)

*Copying the instruction manual or its parts is only with the written permission of FLAJZAR, s.r.o*



# GPS Receiver E2-GPS

Extension accessories  
for the EMA2 car alarm



## GPS Receiver E2-GPS

It extends the EMA2 car alarm capabilities by accurate GPS localization.

Refer to the EMA2 car alarm instructions for more information on using the GPS receiver.

## Installation and Location

It is important for the correct function of the GPS receiver to place it so that it has the best 'view' of the sky. The ideal location inside a car is under a windscreen on a dashboard or on upholstery on the sides of luggage compartment windows. The GPS receiver can also be installed under the upholstery if it does not contain metallic elements.

The GPS receiver can be attached using double-sided tape or screws.

## Specifications

|                               |   |
|-------------------------------|---|
| <i>Dimensions:</i>            | 35 × 52 × 15 mm                                   |
| <i>Cable length:</i>          | 1 m   |
| <i>Power supply:</i>          | 3.4–4.5V DC, consumption<br>0.5–25 mA             |
| <i>Operating temperature:</i> | -20 to +70 °C                                     |
| <i>GPS channels:</i>          | 22 monitoring, 66 acquisition                     |
| <i>GPS sensitivity:</i>       | -165 dBm monitoring,<br>-148 dBm acquisition      |
| <i>GPS accuracy:</i>          | typically < 10 m with a direct<br>view of the sky |

**Note:** *The GPS receiver E2GPS is only intended for connection and use with the EMA2 car alarm. Connecting it to another device may damage the GPS receiver or device.*

## Recycling

Information for users to dispose of electrical and electronic equipment. The symbol on the product, its packaging or in the accompanying documentation means that the used electrical or electronic products must not be disposed together with municipal waste. In order to properly dispose of the product, transfer it to the designated collection points where they will be accepted free of charge. Improper disposal of this type of waste may be subject to fines in accordance with national regulations.



The device battery can be changed by the device manufacturer at the following address:



**FLAJZAR, s.r.o., Lidéřovice no. 151,  
696 61 Vnorovy (Hodonín)**

Tel.: +420 776 586 866, [www.flajzar.cz](http://www.flajzar.cz).

The manufacturer shall secure their ecological disposal at their own expense. Incorrect disposal of used batteries and accumulators could damage the environment.

**Do not disassemble, short-circuit or throw them in fire.**

#### Manufacturer, servicing and technical support

**FLAJZAR, s.r.o.,**

Lidéřovice no. 151, 696 61 Vnorovy (Hodonín)

E-mail: [flajzar@flajzar.cz](mailto:flajzar@flajzar.cz), [www.flajzar.cz](http://www.flajzar.cz)

Tel.: +420 776 586 866

Send any technical questions on the device via email to [technik@flajzar.cz](mailto:technik@flajzar.cz)

*Copying the instruction manual or its parts is only with the written permission of FLAJZAR, s.r.o*



# Wireless Motion Detector E2-PIR

## Shock detector E2-OTR

### Combined detector E2-KOMBI

Wireless accessories  
for the EMA2 car alarm

**E2-PIR**



**E2-KOMBI**



**E2-OTR**



#### E2-PIR, E2-OTR and E2-KOMBI

They are used for easy extension of the EMA2 car alarm by additional sensors to secure the luggage compartment or property near your car, such as a caravan.

**E2-PIR:** Wireless detector responding to the motion of persons in the monitored area.

**E2-OTR:** Wireless shock detector.

**E2-KOMBI:** Wireless motion detector with shock detector.

## LEARN Button

When pressed, it sends the learn code for pairing with the EMA2 car alarm, it switches on the detector if it was turned off. When pressed for more than 6 seconds, the detector is turned off.

The button is on the bottom of the box; use a paper clip to press it.

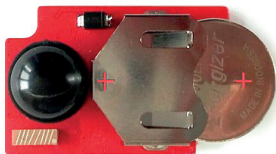
See the EMA2 car alarm instructions for pairing procedure.



## Battery Replacement

Loosen the two bottom screws at the corners of the box using a narrow crosshead screwdriver and open the lower lid, remove the electronics and replace the old battery with a new one. Please observe the polarity indicated on the battery and the battery holder. Close and screw the box.

We recommend using only high quality batteries from Panasonic, Varta, Energizer, GP, Sony or Duracell.



## Installation and Location

### E2-PIR and E2-KOMBI:

The PIR motion detector operates on the principle of detecting bodies that have a different temperature than their ambient temperature. Due to this fact, several general rules for the use of PIR detectors must be observed when selecting the location of their installation, thus avoiding false alarms.

- install the detector only indoors where there is no airflow
- do not point the detector at objects that can quickly change their temperature, such as windows (warmed by sunshine) or air-conditioning outlet
- do not install the detector above or near heat sources
- there must be no obstacles between the motion detector and the monitored area

E2-PIR, E2-OTR and E2-KOMBI can be installed in any position; they can be attached using double-sided tape or screws.

## Alarm Alert

To save the alarm sensor battery, the sensor is blocked for 15 minutes after sending an alarm. Sending another alarm is only allowed if the sensor does not detect shocks (E2-OTR) or motion in the area (E2-PIR) or both (E2-KOMBI) for 15 minutes.

## Intrusion Detection

E2-PIR reports an alarm when detecting motion in the area

- E2-OTR reports an alarm when shocks are detected
- E2-KOMBI reports an alarm only when the shocks and motion are detected in the area at the same time within one minute

## Specifications

- Dimensions:** 68 × 36 × 16 mm
- Battery:** CR2450, type lifetime 1 year
- Operating band:** 868 MHz
- Operating temperature:** -10 to +55°C
- Communication range:** up to 50 m in free space, up to 15 m in a building
- PIR detector:** 2m range, 90° detection angle (applies to E2PIR and E2KOMBI)

## Recycling

Information for users to dispose of electrical and electronic equipment. The symbol on the product, its packaging or in the accompanying documentation means that the used electrical or electronic products must not be disposed together with municipal waste. In order to properly dispose of the product, transfer it to the designated collection points where they will be accepted free of charge. Improper disposal of this type of waste may be subject to fines in accordance with national regulations.

The device battery can be changed by the device manufacturer at the following address:



**FLAJZAR, s.r.o., Lidéřovice no. 151,  
696 61 Vnorovy (Hodonín)**

Tel.: +420 776 586 866, [www.flajzar.cz](http://www.flajzar.cz).

The manufacturer shall secure their ecological disposal at their own expense. Incorrect disposal of used batteries and accumulators could damage the environment. Do not throw into a fire, do not disassemble and do not short circuit.

### **Manufacturer, servicing and technical support**

**FLAJZAR, s.r.o.,**

Lidéřovice no. 151, 696 61 Vnorovy (Hodonín)

E-mail: [flajzar@flajzar.cz](mailto:flajzar@flajzar.cz), [www.flajzar.cz](http://www.flajzar.cz)

Tel.: +420 776 586 866

Send any technical questions on the device via email to [technik@flajzar.cz](mailto:technik@flajzar.cz)

*Copying the instruction manual or its parts is only with the written permission of FLAJZAR, s.r.o*

