



FED4 Electronic Bite Alarm for Night Feeder Fishing

Instructions for operation and use (last update July 15th, 2022)

This innovative bite alarm is especially adapted for Feeder fishing in the dark and at night. It stands out for its unique three-axis bite detection method using state-of-the-art components with the lowest possible consumption, therefore guaranteeing high reliability and long operation time.

Bite detection is assessed on the basis of the rod bending on 3 sensitivity levels. The bite alarm will automatically dim the indication after several bites to achieve the longest battery life. Bite is signalled by the LED going on.

FED4 bite alarm description

The FED4 bite alarm's basic function

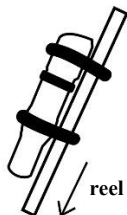
- unique three-axis bite detection
- optical signalling of a fish bite when night fishing
- 3 sensitivity levels
- power saving mode (after 10s of movement, the LED deactivates and further activation will take place if the bite alarm doesn't move)

Attachment possibilities the tip of the rod:

- attachment to the tip of the rod using O-rings
- using a conical bracket

Attaching the bite alarm to a rod

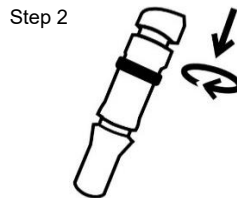
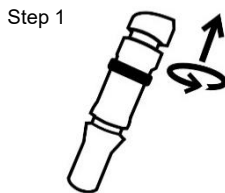
The package includes 2 O-rings, whereby you can attach the bite alarm to the tip of your feeder rod. Place the bite alarm (as shown below) with the LED towards you, for example, towards the reel, so that you can clearly see the optical signalling.



Switching on and setting the bite alarm

The bite alarm consists of two parts, the battery and the electronics. Switching on and setting is done by screwing both parts of the bite alarm into each other.

- If the bite alarm parts are not attached properly, the bite alarm switches off
- Turn the bite alarm on by tightening it, then it assesses bites according to the selected sensitivity
- By loosening both parts (by just a few millimetres) and then retightening, it's possible to adjust the bite alarm's sensitivity on three levels. When tightening, the selected sensitivity is indicated by the LED flashes:
 - 1 flash – low sensitivity set; the bite alarm responds to the rod's bending (tilt)
 - 2 flashes – medium sensitivity set; the bite alarm responds to rod's bending (tilt) and strong vibration
 - 3 flashes – high sensitivity set; the bite alarm responds to rod's bending (tilt) and fine vibration



Bite alarm functions

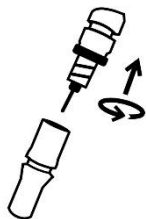
As soon as the bite alarm sensor detects a change in the rod's bending or vibration, the signal is analysed and, in the case of bite assessment depending on the selected sensitivity, it triggers an optical signal. If the bite continues, the bite alarm continues to indicate the bite intermittently. In order to avoid unwanted battery discharge, the indication is automatically muted after several bites and the bite's assessment is automatically resumed once the rod stops moving.

The battery must be inserted before switching on; see procedure below

Battery replacement/insertion

Unscrewing the cover allows access to the battery. Now, it can be removed easily from the bite alarm

Unscrew the cover



Now, the battery can be removed



FED bite alarm technical parameters

- Supply voltage: 3V (1 x CR425)
- Dimensions (H x W x D): 41 x 9 x 9mm; weight: 2.5 g (without bracket), 3.5 g (with bracket)

Package contents:

- Fishtron Feeder4 bite alarm
- textile case
- 2 attachment O-rings
- 1 CR425 charging cells
- operation manual

After-warranty service

After-warranty service is done exclusively by the Czech manufacturer – FLAJZAR, s.r.o. We give our best efforts to help you solve every problem in the shortest possible time.

Quick email contact in case of problems: obchod@flajzar.cz.

Recycling

Information for users on electrical and electronic equipment disposal. The symbol on the product, its packaging or in the accompanying documentation means that used electrical and electronic products must not be disposed of with other household waste. In order to dispose of the product properly, please return it to the designated collection points, where it will be accepted free of charge.



Batteries

Never throw batteries into a fire, never dismantle them, never short-circuit them.

Manufacturer / service / technical support

FLAJZAR, s.r.o.
Svatoplukova 1199
698 01 Veselí nad Moravou
Phone: + 420 776 586 866
Email: obchod@flajzar.cz
www.flajzar.cz