



The FISHTRON Q9-RGB TX Bite Alarm

Instructions for operation and use (last updated on 1 Nov 2017)

Thank you for purchasing the FISHTRON Q9-RGB TX bite alarm.
We hope you'll be satisfied.

Description of the FISHTRON Q9-RGB TX Bite Alarm

Basic functions of the FISHTRON Q9-RGB TX

Multifunctional optical signalling, consisting of a series of LEDs. It indicates the direction of unwinding fishing line.

Sound signalling with smooth amplification control

Sensitivity control (of the length of unwinding fishing line) from 4 mm to 150 mm (approx.)

Volume and pitch control

Connector for swinger connection

Integrated remote listening transmitter (works with the FISHTRON RX MULTI, FISHTRON RX SIX or FISHTRON RX MINI receiver)

Possible LED colour change in six shades

MUTE function – sound and transmission off; used in the preparation phase of the detector for fishing (weight setting)

Night positional light

Sound signalling

Fishing line unwinding is signalled by an audible tone with the option to adjust the pitch. When the fishing line is moving faster, there is a continuous tone to alert a fisherman to a more vigorous fish bite.

The opposite direction (parachute) is signalled by multiple short sounds.

Optical signalling

A series of LEDs located under transparent coloured Perspex provide a clear view of the activity. The direction display of the unwinding fishing line is resolved in an efficient and clear manner. The unwinding forward is signalled by LEDs by gradually turning on and off from bottom to top. The parachute is then signalled by LEDs moving downward.

LED memory function is activated after a bite so that the fisherman is alerted to the bite even with a delay and has the ability to determine the direction in which the fishing line moved. If the fishing line moves forward, it is followed by memory signalling turning on in the form of a LED at the top. If it moves backward (parachute), a LED lights up at the bottom of the slit.

Control of basic functions

Turning on/off

Turn the bite alarm on and off with a brief (approx. 1 sec) press of the button located on the bottom left part. (The button is referred to as the **PWR** in the instructions.) A double high-pitched tone is heard when turning it on, a longer deeper tone when turning it off. When turned on, the LED column runs from the bottom up.

Sensitivity control

The length of the fishing line feed is set by a rotary knob marked as 'S'.

Sensitivity with reverse operation (parachute) differentiation; fishing line feed length from about **4 mm to 150 mm**.

The left is the lowest sensitivity and the highest is on the right.

Volume control

The volume is controlled in a conventional way using a rotary knob 'V'. The highest volume is set on the right; the sound is turned off on the left. For example, this can be used if you have remote listening connected or you fish at night and don't want to disturb your surroundings.

Pitch control

The pitch is set by a control knob marked as 'T'. The deepest tone, reminiscent of a duck, to the left; the highest tone is set by turning to the right – it is well audible even from a greater distance.

LED brightness control

A new feature on the FISHTRON Q9-RGB bite alarm is the possibility to change LED brightness. It's set by briefly pressing the lower 'FC' (Function) button. Brightness can be set in four stages.

LED colour change

Holding the PWR button and pressing the FC button briefly changes the LED colour. Repeatedly pressing FC changes to the next colour. In total, you can select from six colour shades.

MUTE function

With FISHTRON Q9-RGB TX, you can easily turn off sounds which is convenient when fishing rods, weights, etc. The function is switched on by pressing the 'PWR' button very briefly. Two LEDs start flashing alternately, signalling the function. The function is automatically cancelled in about 60 seconds or can be cancelled by briefly pressing the 'PWR' button again.

Night positional light

It's possible to switch on the so-called positional LED at night. Press and hold the 'PWR' button for approximately 3 seconds. A triple sound signal is heard and the upper LED faintly lights-up. When the bite alarm is turned off, this function is cancelled again.

Notice:

Whether you have any LED colour set on the bite alarm, the positional LED is always green due to the lowest consumption.

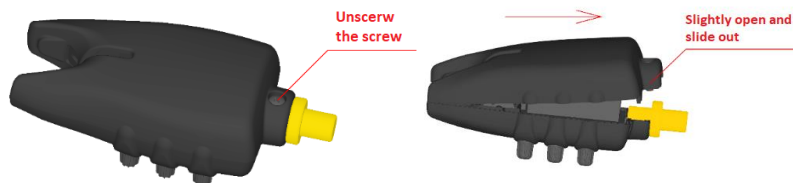
Battery replacement

Even though the bite alarm is designed with minimal power consumption which results in a long battery life, the batteries will need to be replaced one day.

Low battery is reflected by reduced LED brightness, reduced volume, and the bite alarm can also be turned off automatically (automatic internal CPU protection). You will notice a reduction in battery voltage for blue LEDs more noticeably; although they are very popular, their disadvantage is the need for higher voltage which is why they go out sooner than the other colours when discharging.

It's therefore probable that you will change the batteries more often for the bite alarm with blue LEDs.

Two LR1 LADY cells are located under the back cover of the bite alarm. It's secured by a single screw at the bottom. After unscrewing it, carefully raise the cover and pull it downward (towards the screw).



When inserting new batteries, be careful regarding their correct orientation. In the case of the batteries reversed polarity the bite alarm won't work and damage may occur. When changing the battery, keep the bite alarm in a horizontal position with the controls down, otherwise the sensing pulley may fall out. If that happens, nothing happens, just put it back in place.

After replacing the battery, push the back cover back into the locks and close it. Tighten the lower screw **lightly**.

The FISHTRON Q9-RGB TX specifications

Dimensions: height without screw 85 mm, width 47 mm maximum, depth 30 mm, screw length 21 mm

Power: 3V (2 LR1 LADY batteries)

Power consumption: off-state: 0.00 mA, on – rest: 15 uA (microampere), on – bite sounding: 150 mA maximum, impulsively

Swinger connection connector: JACK 2.5mm mono, centre wire +, voltage 3 V maximum, load 5 mA maximum

How to Reach the Kit's Maximum Range

The kit's range, the alarm – receiver, is up to several hundred metres in free space and up to 500 m on flat surfaces. Any terrain inequality, shore, slope, buildings, cars or other obstacles limit the range. If the current conditions and fishing conditions allow it, the alarm should be located at least 0.5 m above-ground (if you have an extreme range requirement). Have the receiver with you and keep it in the top pocket or use a neck strap (threaded under the stainless steel rod at the top of the receiver) if you want to reach the maximum range. Don't place the receiver or transmitter on metal objects. Both the transmitter and the receiver should have their antennas upward. Despite the kit's large reach, we encourage you to observe the Fishing Regulations and don't leave your fishing area at a distance greater than permitted by the Fishing Regulations. Always verify the range at the location after installing the bite alarms.

Declaration of Conformity

The device complies with EU directives and has a Declaration of Conformity.

Post-Warranty Service

The post-warranty service is performed exclusively by the Czech manufacturer – FLAJZAR, s.r.o. We will apply our maximum effort to help you solve every problem in the shortest possible time.

Quick email contact in case of problems: obchod@flajzar.cz.

Recycling

Information for the user's disposal of electrical and electronic equipment. The symbol on the product, its packaging or in the accompanying documentation means that the used electrical or electronic products must not be disposed of together with municipal waste. In order to dispose of the product properly, take it to the designated collection points where it will be accepted free of charge.



Batteries

Don't disassemble, short-circuit or throw the batteries into a fire. Don't recharge the batteries.

Manufacturer/Service/Technical Support

FLAJZAR, s.r.o.
Lidéřovice 151
696 61 Vnorovy
phone: + 420 776 586 866
email: obchod@flajzar.cz
www.flajzar.cz

ES PROHLÁŠENÍ O SHODĚ

Výrobce : FLAJZAR, s.r.o., se sídlem Kasárna 500, Bzenec, PSČ: 696 61, IČO: 01616161,

prohlašuje

Zařízení: Sada signalizátorů pro rybáře Fishtron Q9-RGB
Typ/model: Fishtron Q9RGB TX, Fishtron RX MULTI (Q9RGB Rx)

Je ve shodě s ustanoveními vlády č. 426/2016 Sb. Ve znění pozdějších předpisů, kterými se stanoví technické požadavky na rádiová a na telekomunikační koncová zařízení, uvedené ve směrnici 2014/53/EU.

Zařízení splňuje požadavky následujících předpisů a norem :

EMC:	CSN EN 55032 ed.2:2016
	CSN EN 55024 ed.2:2011
	CSN EN 61000-4-2 ed.2:2009
	CSN EN 61000-4-3 ed.3:2006+A1:2008+A2:2011
Radiové parametry:	CSN ETSI EN 300 220-2 V 2.4.1:2013
	CSN ETSI EN 300 220-1 V 2.4.1:2013
	CSN ETSI EN 301 489-3 V1.6.1:2013
	CSN ETSI EN 301 489-1 V1.9.2:2012
Bezpečnost:	CSN EN 60950-1 ed.2

Výrobek je bezpečný za podmínek obvyklého použití a v souladu s návodem k výrobku.

Prohlášení o shodě je vydáváno na základě těchto podkladů:

- 1) Zkušební protokol č. 414103353AE1, vydaný Institutem pro testování a certifikaci, a.s., akreditovaná zkušební laboratoř č. 1004.3, Sokolovská 573, Uherské Hradiště 686 01
- 2) Protokol o zkoušce č. 194300-048/2017, vydaný Vojenským technickým ústav, s.p., odštěpný závod VTÚPV Úsek zkoušení techniky, V.Nejedlého 691, 662 03 Vyškov, akreditovaná zkušební laboratoř č. 1103
- 3) Protokol elektrické bezpečnosti vydáný dne 10.3.2017

Na tento výrobek, byla umístěna značka CE.

Toto prohlášení je vydáno na výhradní odpovědnost výrobce.

Ve Bzenci dne 24.10.2017



Vojtěch Pánek – Jednatel :